



Open SDG Engagement Platform

Addressing the World's Challenges

Environment

Science & Technology

Infrastructure

Economic Development

Natural Resources

Population

Open SDG Engagement Platform

Addressing the World's Challenges

Transparent Government

Natural Disasters

Business

Agriculture

Water Resources

National Security

Human Health

Climate Change

Urbanization & Development

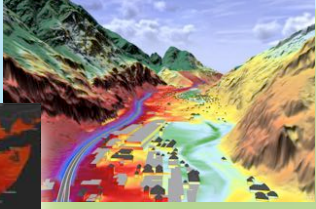
Nature Conservation

Social Conflicts

Energy

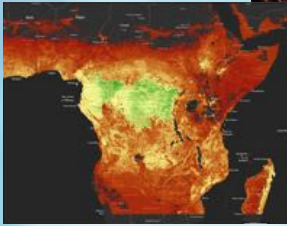
Charles Brigham
Nonprofit and Global Organizations
Esri
cbrigham@esri.com

Noise Modeling



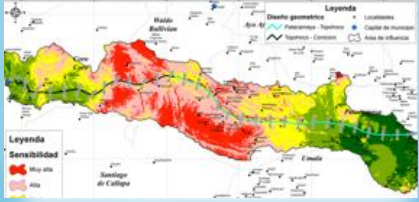
Switzerland

Biomass Assessment



Africa

Ecosystem Sensitivity



Bolivia

Solar and Wind Energy



Philippines

Desertification Survey



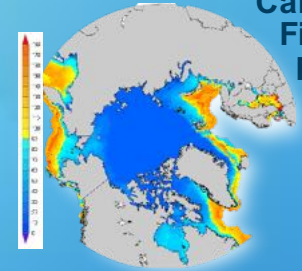
Turkey

Zika Exposure Risk



Americas

Calculate First Ice Freeze

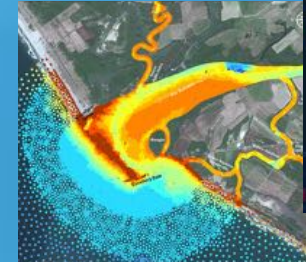


Reef Health



Cook Islands

Sediment Change



Mexico



Renewable Energy Monitoring



Citizen Portal

China



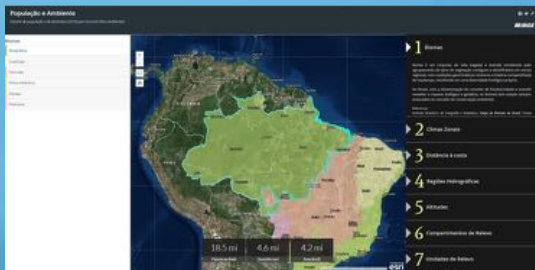
Ireland

Food Supply



WFP-Yemen

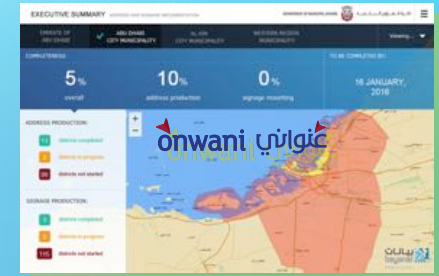
Statistical Reporting



Brazil

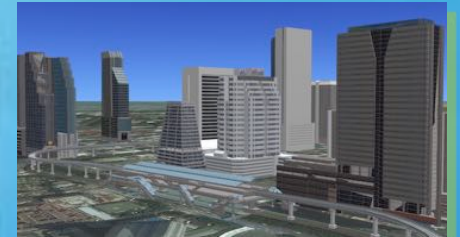


Addressing Systems



Abu Dhabi, UAE

Transit Station Design



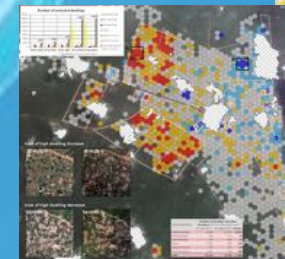
Thailand

Cell Coverage



India

Refugee Camps



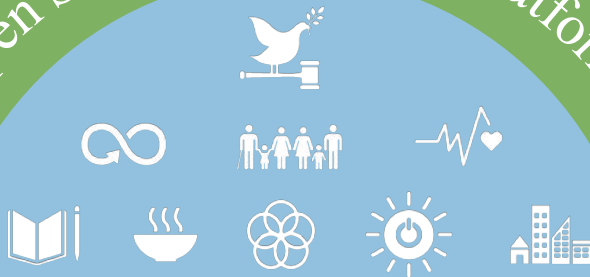
South Sudan

SDG Data Engagement Platform

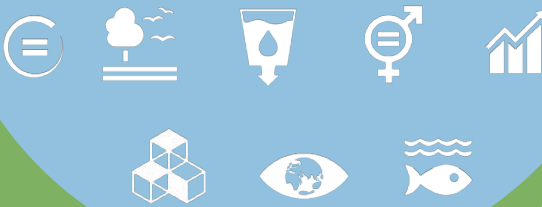
Applications and Tools



Open SDG Engagement Platform

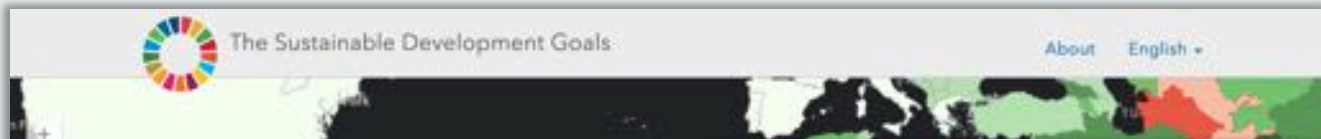


The Goals



Dashboards Narratives

Open APIs Applications



SDG 03: Good Health and Well-being

Ensure healthy lives and promote well-being for all at all ages

[How can I Contribute?](#)

SDG 3 Global Progress No Data 3.3

3.3 By 2030, end the epidemics of AIDS, tuberculosis, malaria and neglected tropical diseases and combat hepatitis, water-borne diseases and other communicable diseases

Estimated number of people (all ages) living with HIV

Reported Malaria Cases: 231,442,843

Estimate HIV Cases: 115,380,100

Understanding the SDGs

Goal 11: Sustainable Cities & Communities

Make cities and human settlements inclusive, safe, resilient and sustainable

SDG 11 11.1 Global Progress Global

11.1 By 2030, ensure access for all to adequate, safe and affordable housing and basic services and upgrade slums.

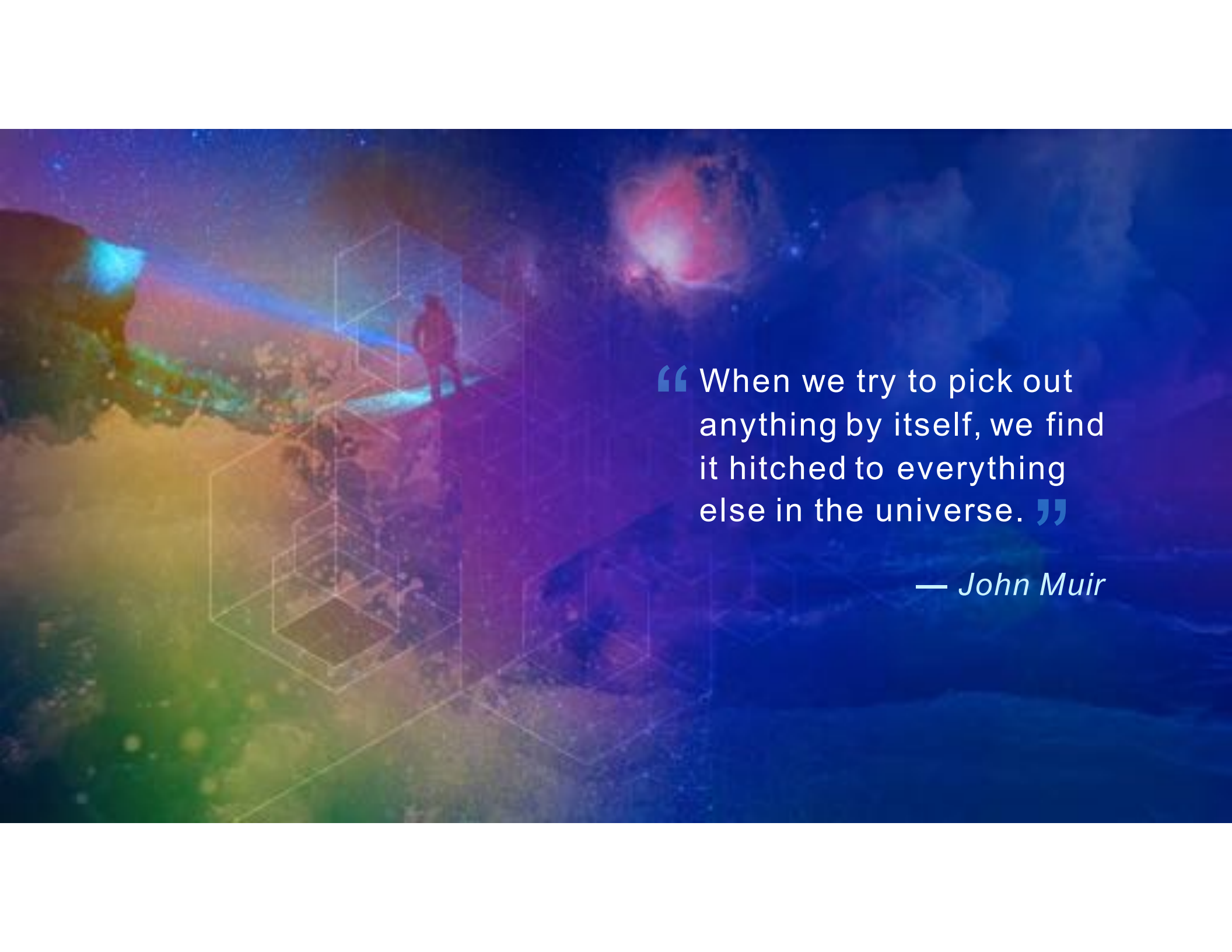
11.1.1 Population Living in Slums (size) vs Total City Population (color)

Average Fine Partic. Matter (PM2.5) Concentration: 20.9%

Average Public Outdoor Recreation Space: 19.8 m²/capita







“ When we try to pick out anything by itself, we find it hitched to everything else in the universe. ”

— *John Muir*